

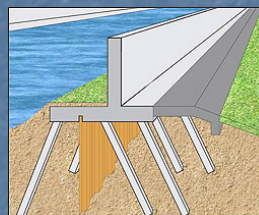
Pile Load Tests for New Orleans Storm Protection Projects

W. Robert Thompson, III, P.E., M.ASCE
Dan Brown and Associates, PLLC

STGEC 2010

- Gulf Intracoastal Waterway West Closure Project
 - 225-ft navigable sector gate
 - 110-ft navigable sector gate
 - 20,000 cfs pumping station
 - Bayou aux Carpes Floodwall
 - Relocated levee and tie-ins

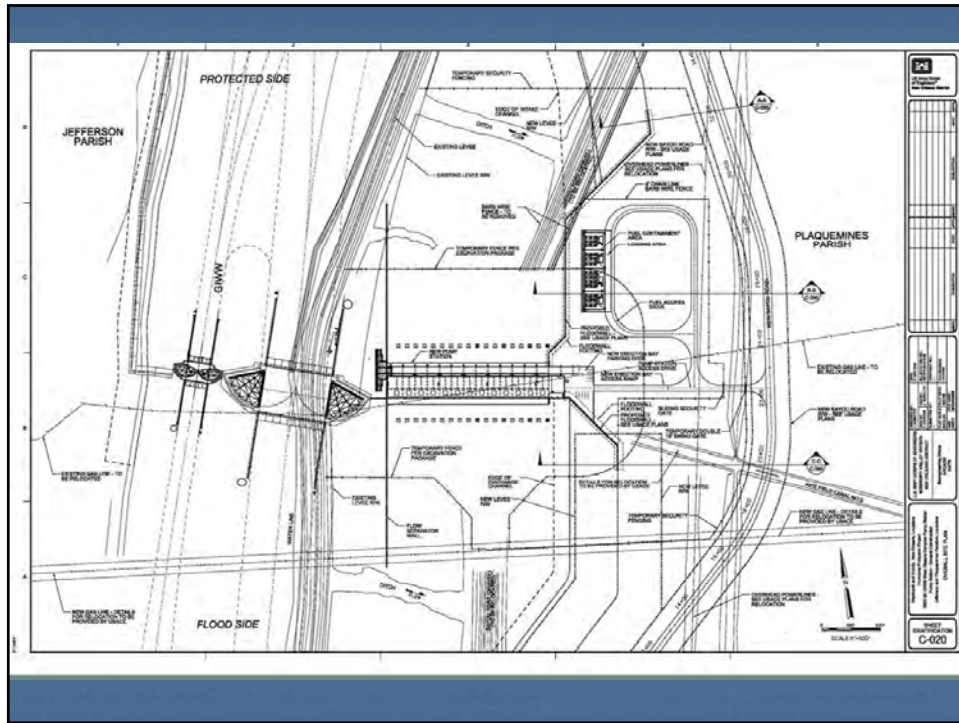
- LPV-145 Levee Improvement (T-walls)
 - 5+ miles of T-wall



Project Roles

- Owner and Designer: U.S. Army Corps of Engineers (Team New Orleans)
- GIWW Contractor: Kiewit/Traylor Brothers JV
- LPV-145 Contractor: Kiewit/Massman/Traylor JV
- DBA worked for Kiewit Engineering Company and both JVs providing engineering support for test pile programs and other construction tasks

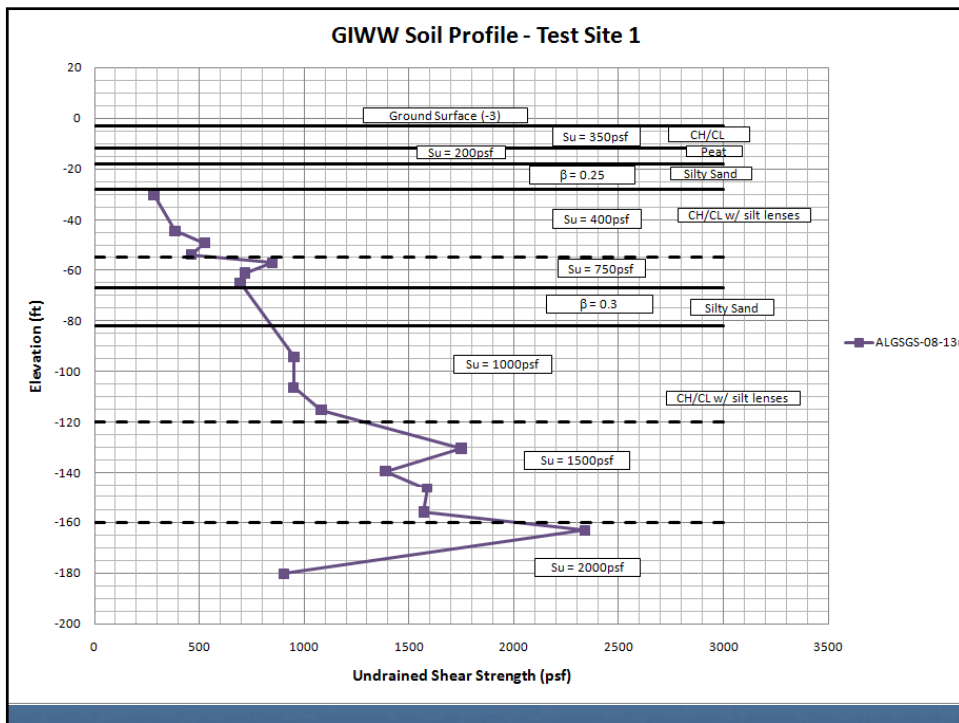


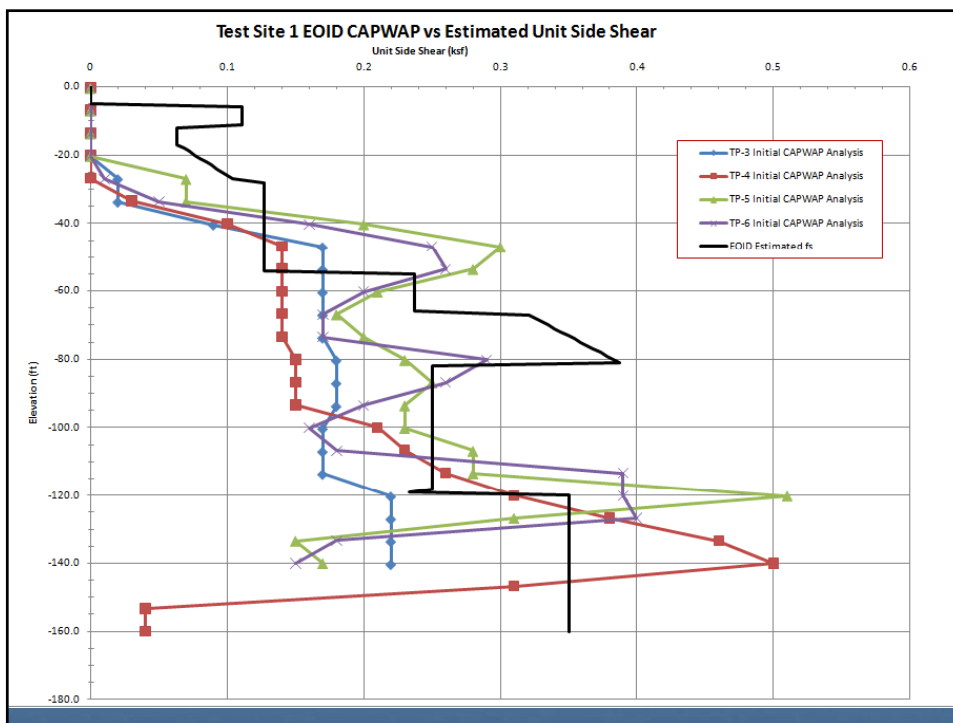
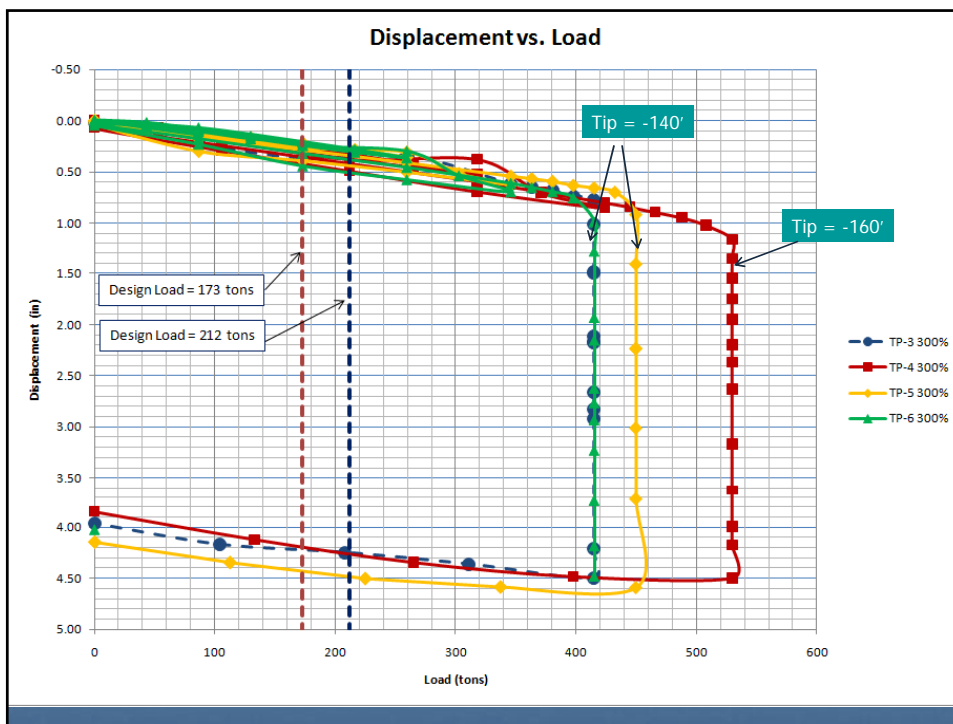


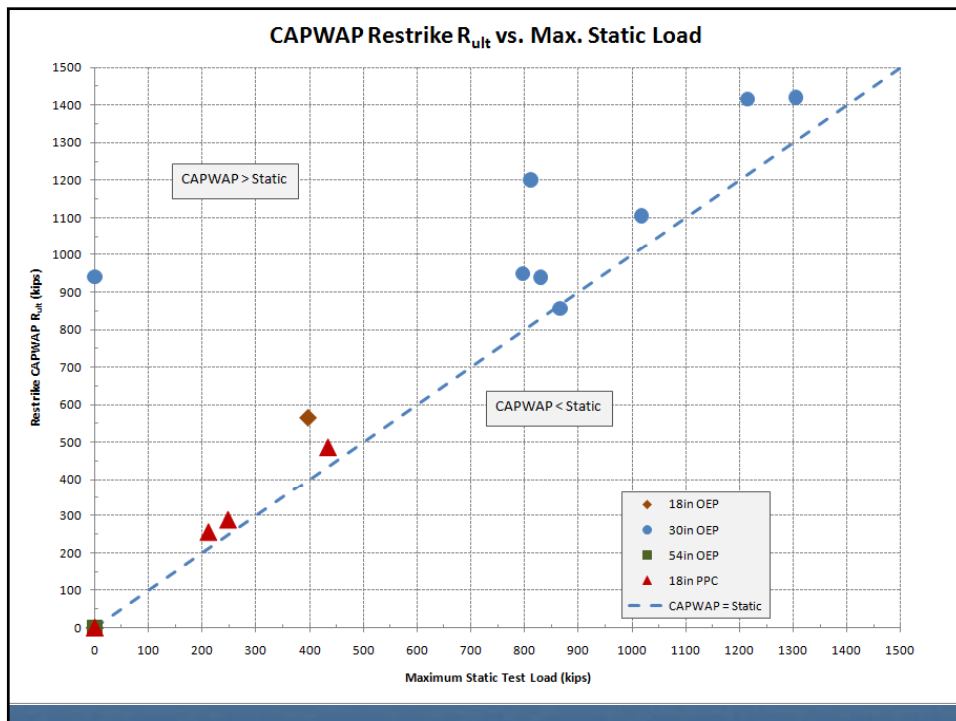
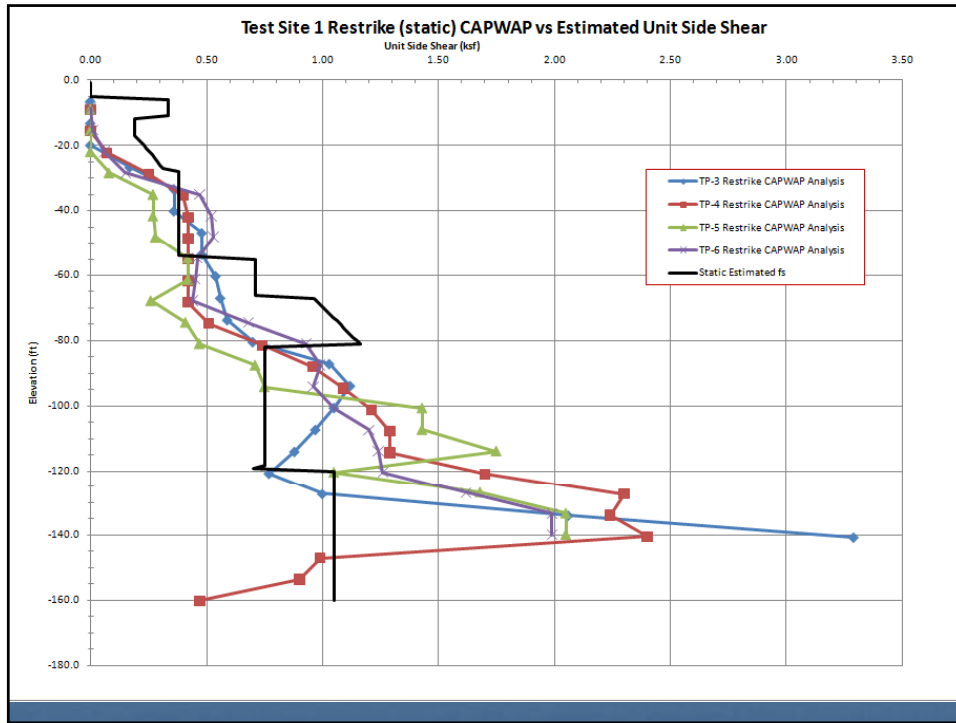
GIWW-WCC Test Pile Program

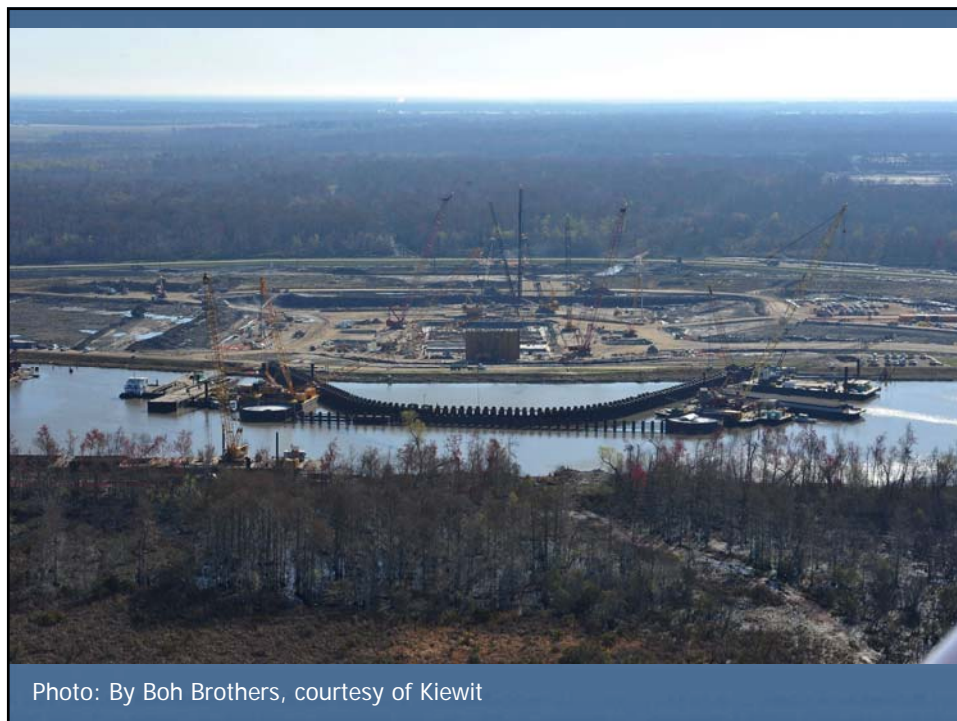
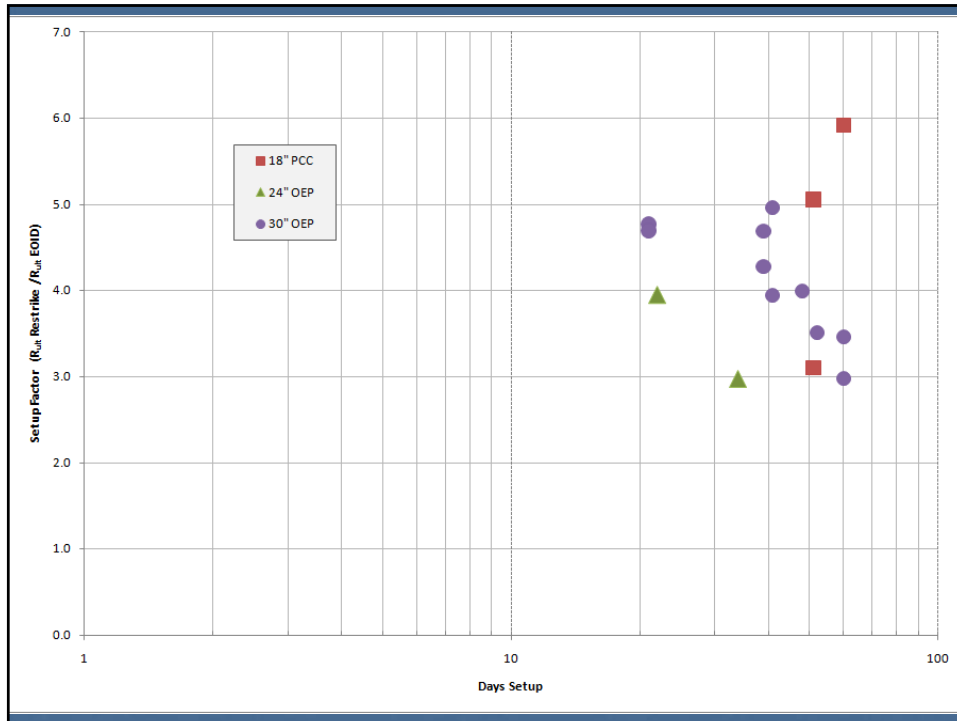
- 33 test piles
- Static Tests – axial, tension, lateral
- Dynamic Tests – Pile Driving Analyzer (PDA) during driving and restrikes over time on the load test piles
- Pile Types:
 - Open-ended pipe piles (24 total)
 - Dia = 18", 24", 30" 54"
 - L = 120' to 180'
 - Concrete piles (9 total)
 - 18" square; L = 102 to 134

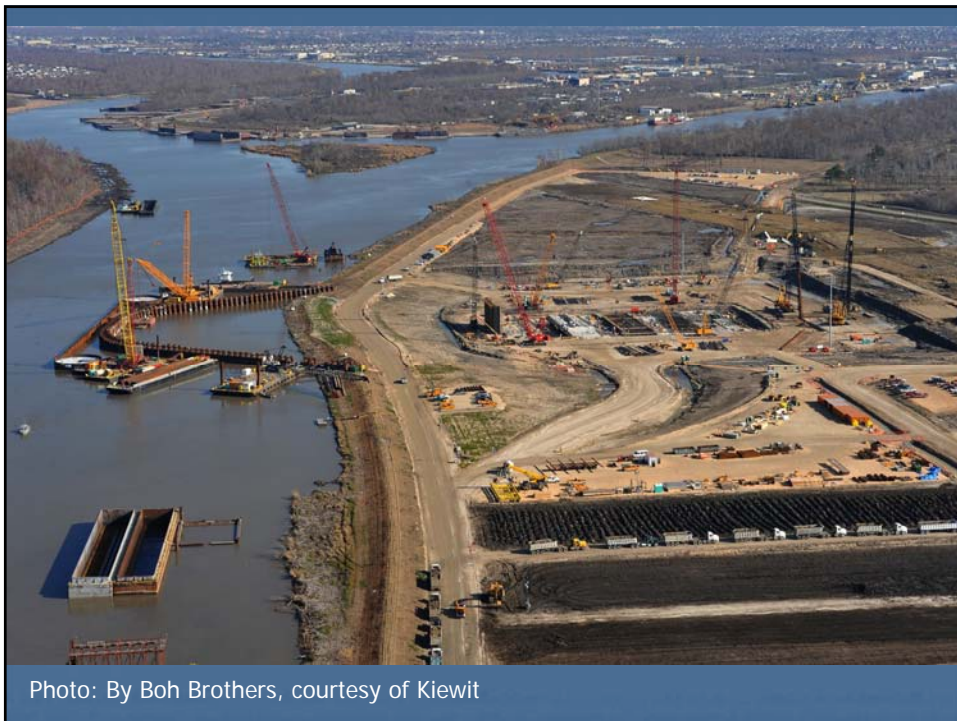










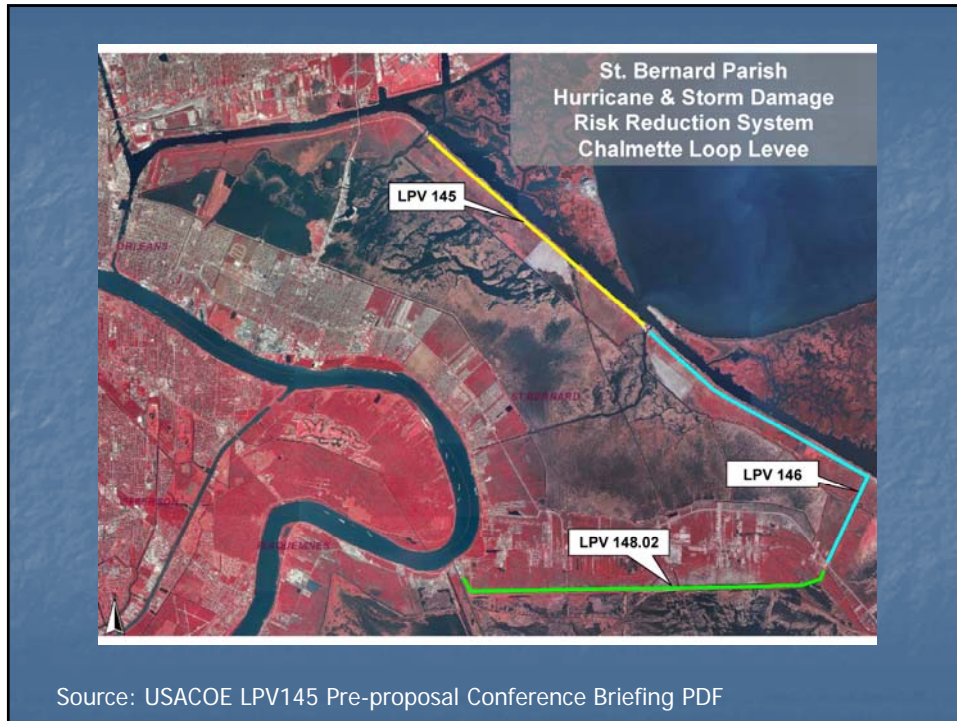


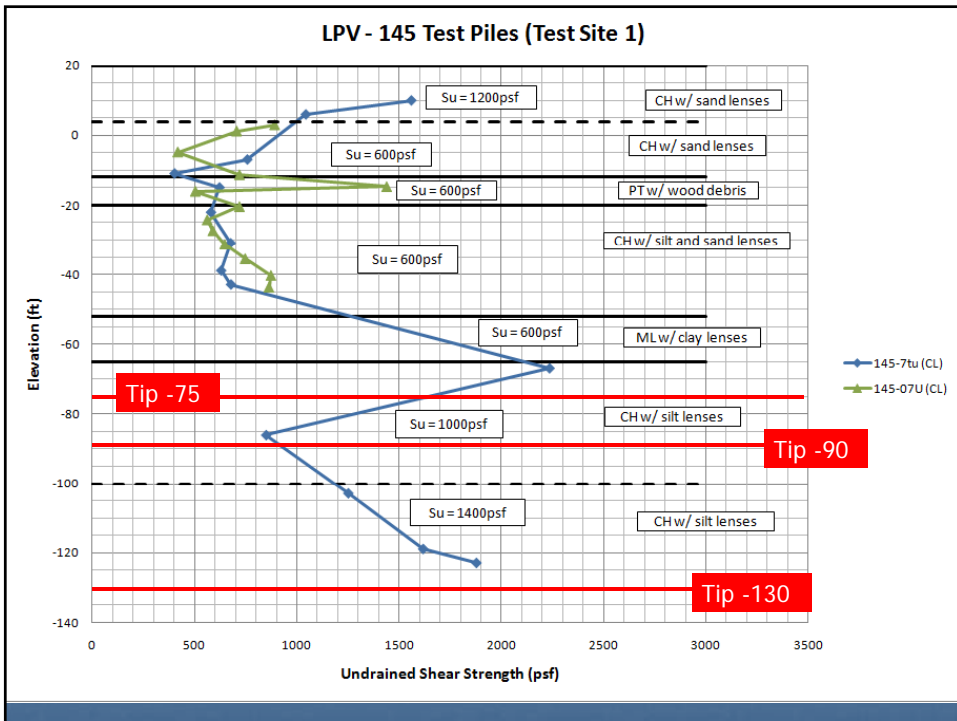


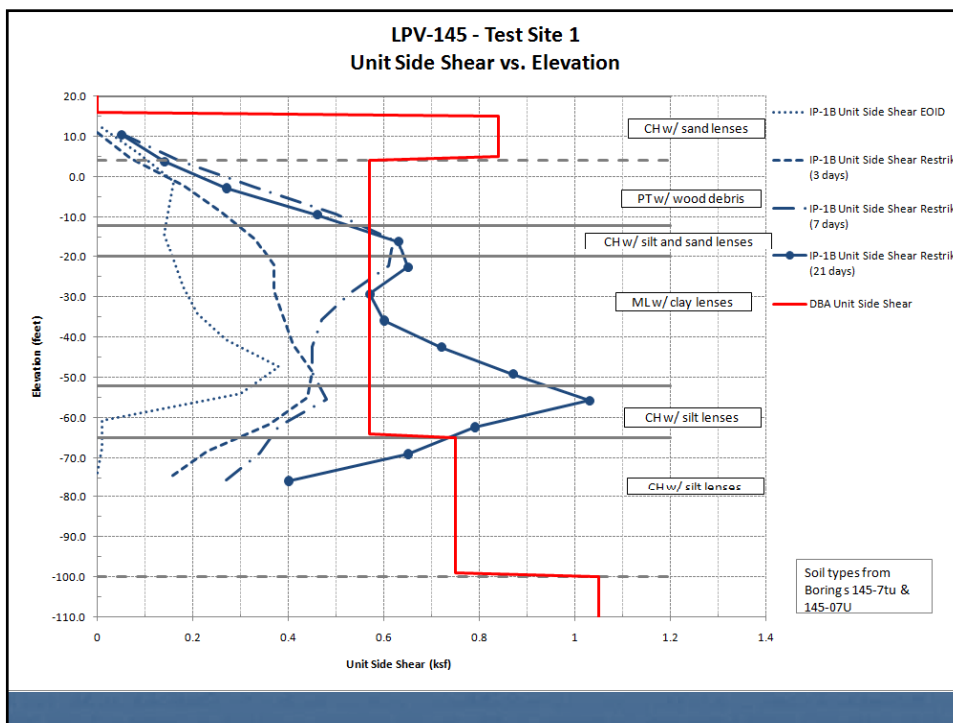
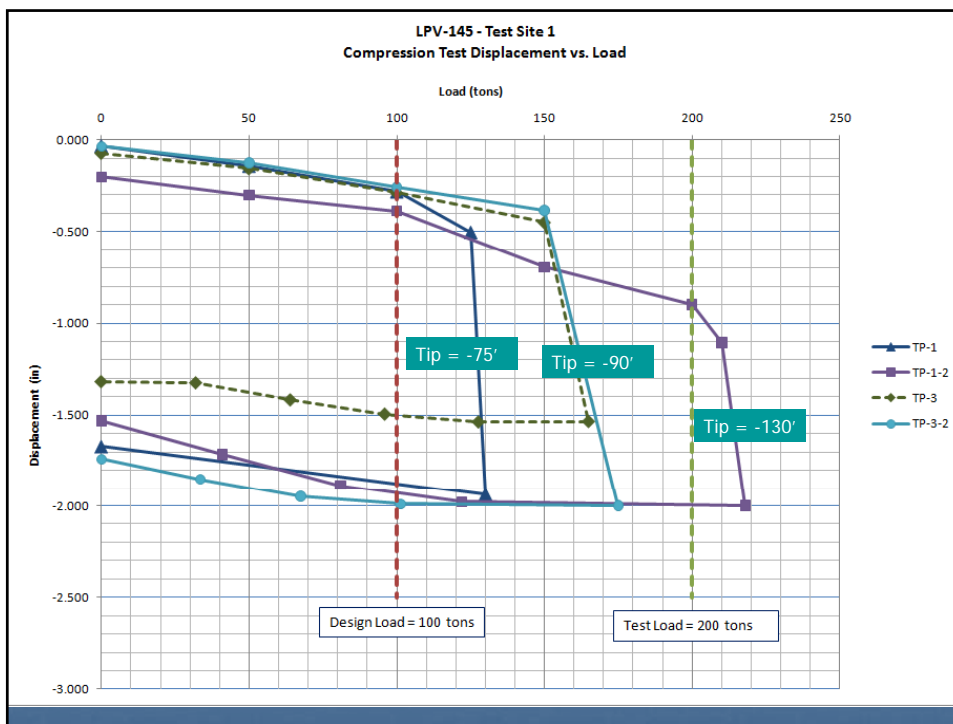
Photos: USACOE Team New Orleans
Photostream on flicker.com

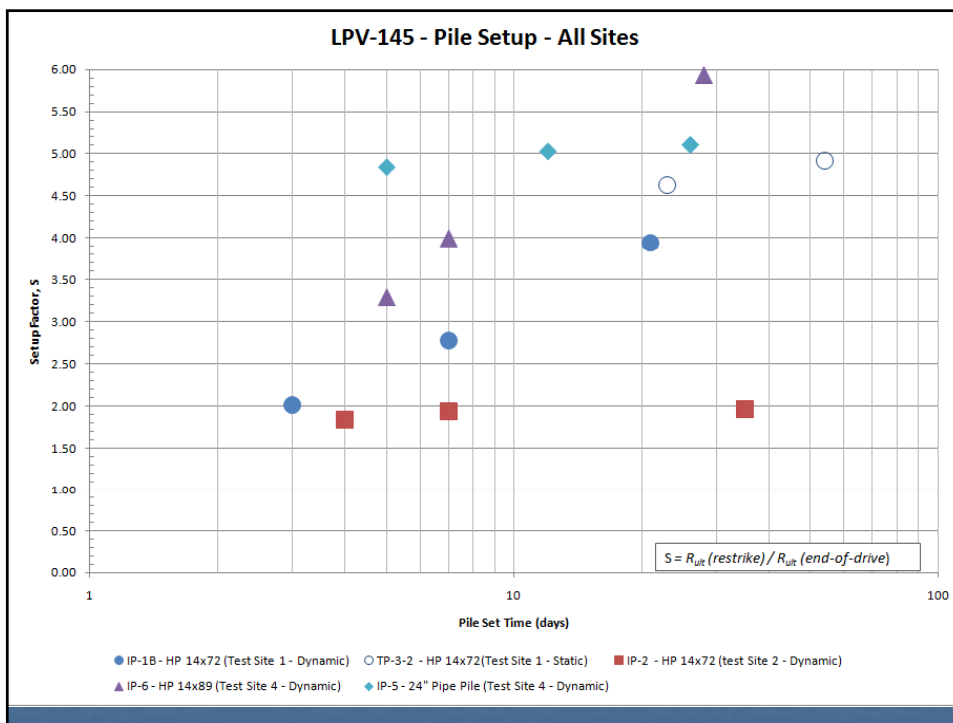
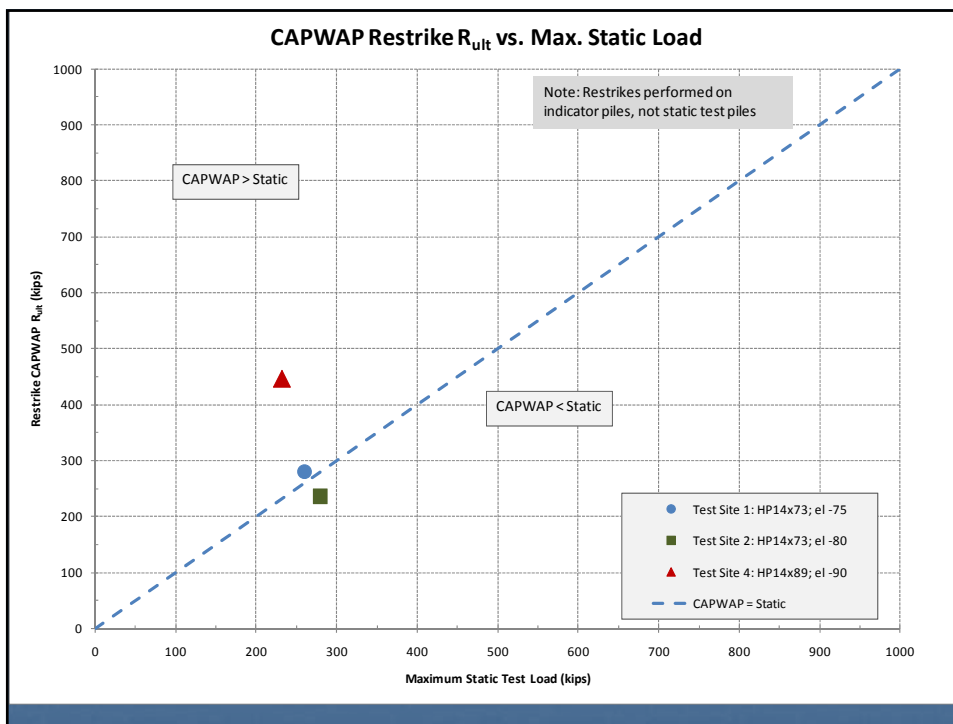
LPV-145 Test Pile Program

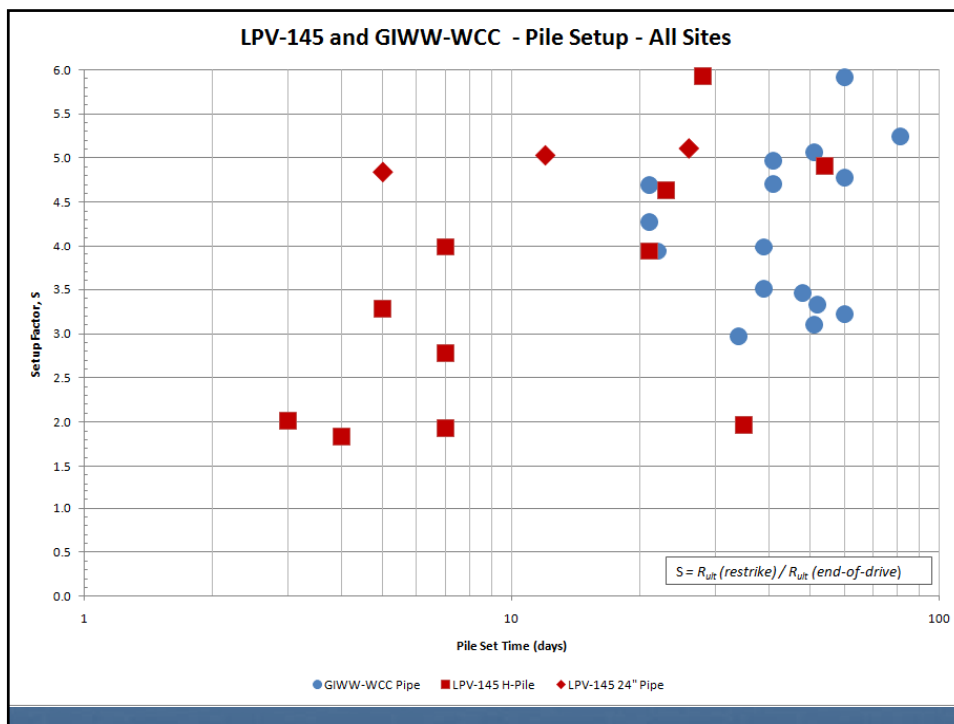
- 4 Test Sites
- 11 test piles (axial and tension)
- 6 indicator piles (dynamic testing)
- HP 14x73, HP14x89, 24" Pipe Piles
 - Lengths 95' to 110' (planned)
- Restrikes on indicator piles, not test piles











Questions?

